

FULL SUN XERIC GARDEN 40' x 15'					
	#	Common Name	Scientific Name	Height & Spread	Bloom Time
A	9	English Lavender	<i>Lavandula angustifolia</i> 'Munstead'	18" x 18"	July-August
B	21	Soapwort	<i>Saponaria ocyroides</i>	6" x 12"	May-June
C	5	Basket of Gold	<i>Aurinia saxatilis</i>	18" x 24"	April-May
D	8	Blue Creeping Phlox	<i>Phlox subulata</i>	6" x 24"	April-May
E	6	Red Valerian	<i>Centranthus ruber</i>	24-36" x 24"	June-September
F	9	Heavy Metal Switch Grass	<i>Panicum virgatum</i> 'Heavy Metal'	3-4' x 12-18"	---
G	11	Starburst Ice Plant	<i>Delosperma floribunda</i>	4" x 24"	May-September
H	7	Sunset Hyssop	<i>Agastache rupestris</i>	24-36" x 30"	July-October
I	6	Candytuft	<i>Iberis sempervirens</i>	12" x 24"	April-May
J	5	Winecup	<i>Callirhoe involucrata</i>	12" x 24"	May-September
K	7	Moonshine Yarrow	<i>Achillea</i> x 'Moonshine'	18-24" x 24"	June-August
L	1	Panchito Manzanita	<i>Arctostaphylos</i> 'Panchito'	2' x 4'	May
M	6	Red Beardstongue	<i>Penstemon pinifolius</i>	24" x 24"	June-August
N	3	Moonbeam Coreopsis	<i>Coreopsis verticillata</i> 'Moonbeam'	24" x 18"	June-September
O	3	Pink Creeping Phlox	<i>Phlox subulata</i>	6" x 24"	April-May
P	1	Russian Sage	<i>Perovskia artilificifolia</i>	4' x 4'	May-September
Q	5	Chocolate Flower	<i>Berlandiera lyrata</i>	15" x 18"	June-September
R	3	Faassen's Catmint	<i>Nepeta</i> x <i>faassenii</i>	15" x 18-24"	June-September
S	3	Lavender Cotton	<i>Santolina chamaecyparissus</i>	12" x 24"	June-August
T	4	Basket-of-Gold	<i>Aurinia saxatilis</i>	18" x 24"	April-May
U	4	Hummingbird Flower	<i>Zauschneria garrettii</i>	12" x 18"	August-September
V	9	Yellow Pineleaf Penstemon	<i>Penstemon pinifolius</i> 'Mersea Yellow'	8" x 12"	June-August
W	1	Pawnee Buttes Sand Cherry	<i>Prunus besseyi</i> 'Pawnee Buttes'	18" x 6'	May
X	3	Bearded Iris	<i>Iris germanica</i>	36" x 18"	May
Y	7	Snow-in-Summer	<i>Cerastium tomentosum</i>	8" x 24"	May-June
Z	1	Fernbush	<i>Chamaebatiara millefolium</i>	4' x 4-6'	June-July

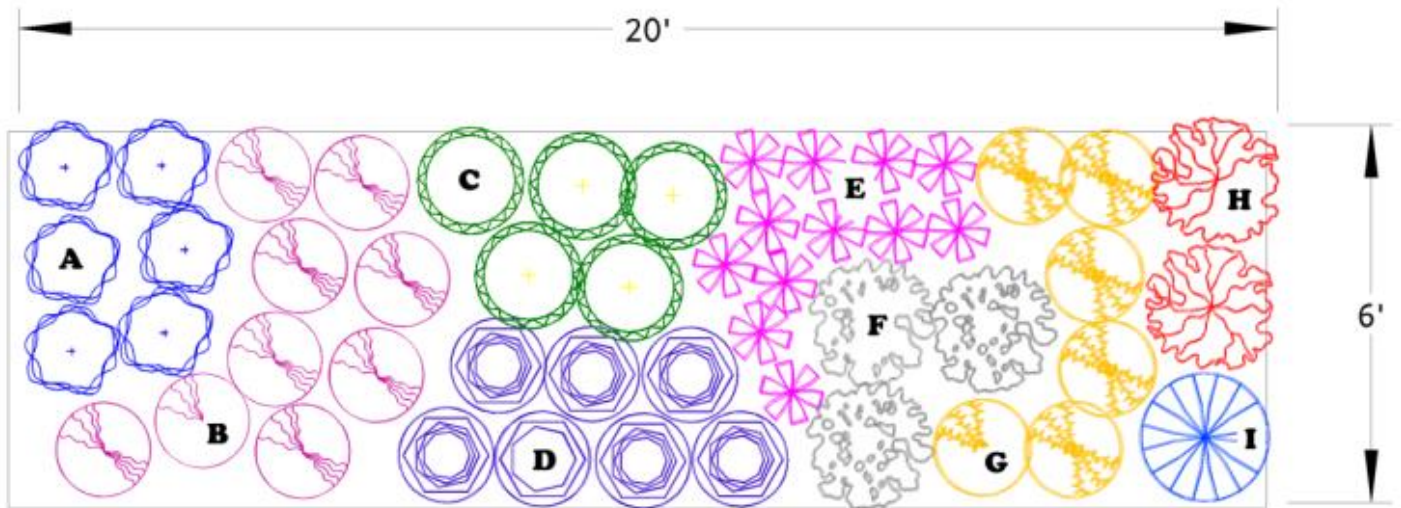
Prepare the soil with 5 to 6 cubic yards of organic matter per 1000 square feet, rototill to a depth of 6 inches.

Mulch the planted garden with 2 to 4 inches of natural cedar fiber mulch for best appearance. Do not use landscape fabrics under the mulch, as they will inhibit the spread of the plants.

It will take 1 to 2 growing seasons of regular deep watering to grow the kind of extensive root system these plants need to withstand dry conditions. Water deeply and infrequently once established.

CASTLE PINES NORTH
METROPOLITAN DISTRICT™

Design by Craig Miller
Parks & Open Space Manager



CURBSIDE PARKING STRIP XERIC GARDEN (FULL SUN)

*To replace the strip of turf that is typically planted between the curb and front walk.
This can also be used along the edges of driveways. Reposition plants as needed to accommodate existing trees.*

#	Common Name	Scientific Name	Height & Spread	Bloom Time
A	Turkish Veronica	<i>Veronica liwanensis</i>	2" x 18"	May-June
B	Double Bubble Mint Hyssop	<i>Agastache cana</i>	24-36" x 18"	July-October
C	Moonshine Yarrow	<i>Achillea</i> 'Moonshine'	18" x 20"	June-August
D	May Night Salvia	<i>Salvia sylvestris</i> × 'Mainacht'	24" x 18"	May-August
E	Elfin Pink Penstemon	<i>Penstemon barbatus</i> 'Elfin Pink'	18" x 12"	May-June
F	Silver Mound Sage	<i>Artemisia schmidtiana</i>	10" x 18-24"	No blooms - silver foliage <i>only</i>
G	Double Sunray Coreopsis	<i>Coreopsis grandiflora</i> 'Sunray'	18-24" x 18"	June-September
H	Red Valerian	<i>Centranthus ruber</i>	24-36" x 24"	June-September
I	Faassen's Catmint	<i>Nepeta</i> × <i>faassenii</i>	15" x 18-24"	May-September

Prepare the soil with 5 to 6 cubic yards of organic matter per 1000 square feet, rototill to a depth of 6 inches.

Mulch the planted garden with 2 to 4 inches of natural cedar fiber mulch for best appearance. Do not use landscape fabrics under the mulch, as they will inhibit the spread of the plants.

Extend the garden length by continuing the design end-to-end.

It will take 1 to 2 growing seasons of regular deep watering to grow the kind of extensive root system these plants need to withstand dry conditions. Water deeply and infrequently once established.